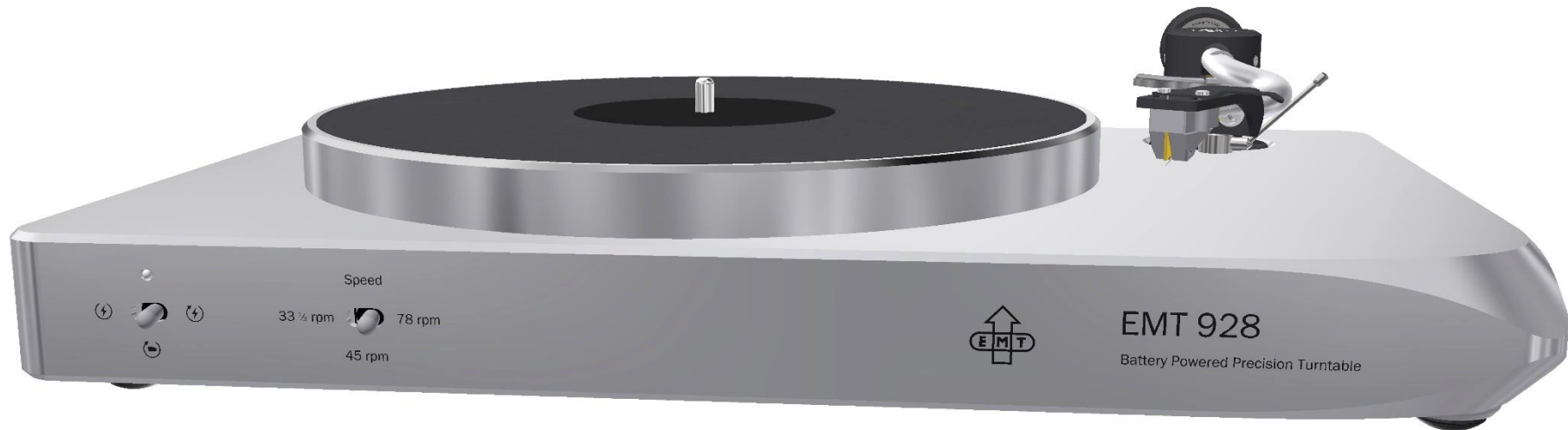




## User Manual

### EMT 928 II: Battery Powered Precision Turntable



Thank you for choosing the EMT turntable.

Please take time to install and adjust your product properly. Remember to work carefully and to follow the instruction manual step by step.

You will find actual information about our products on [www.emt-tontechnik.ch](http://www.emt-tontechnik.ch).



## Safety warning

---

- Read this manual carefully before putting the EMT 928 into operation.
- The EMT 928 is a Class I product. It is essential that it is connected to a mains socket outlet with a protective earthing connection.
- Never try to open your EMT 928 when it is powered to prevent the risk of electric shock and burns. Switch it OFF, remove the mains cable from the back before any intervention into your EMT 928.
- The EMT 928 must not be exposed to water or liquids. Use indoors only.
- Should you have any questions on how to setup or use your EMT 928, please contact your EMT dealer.

## Warranty

---

EMT Tontechnik certifies that this device has been inspected and tested before leaving the factory.

This product is covered by EMT's two-year warranty, valid from the day of purchase (dealer's invoice). It covers all factory materials and processing errors.

However, this warranty does not cover any failure caused by putting the device to improper use; malfunction caused by neglecting the instructions elsewhere in the owner's booklet; normal wear. Unauthorized disassembly or modifications whatsoever of the product will also void the warranty. In any case of warranty claims please contact your dealer.



## Disposal

---



Disposal of old electrical & electronic equipment (Applicable in the European Union and other European countries with separate collection systems).

This symbol on the product or on its packaging indicates that it should be handed over to the applicable collection point for the recycling of electrical and electronic equipment. By ensuring this product is disposed of correctly, you will help prevent potential negative consequences for the environment and human health. The recycling of materials will help to conserve natural resources. For more detailed information about recycling of this product, please contact your local authority, your household waste disposal service or the shop where you purchased the product.

## EMT 928 Configuration

---

The EMT 928 turntable can be ordered in two different configurations:

### (1) EMT 928 II

The product is delivered with no tonearm installed. For installing the tonearm, please refer to page 5 of this manual.

### (2) EMT 928 II Package

The product is delivered including the EMT 909 tonearm. The tonearm is installed and aligned. You can skip page 5 of this manual.

In general, the illustrations in this manual show the EMT 928 Package.

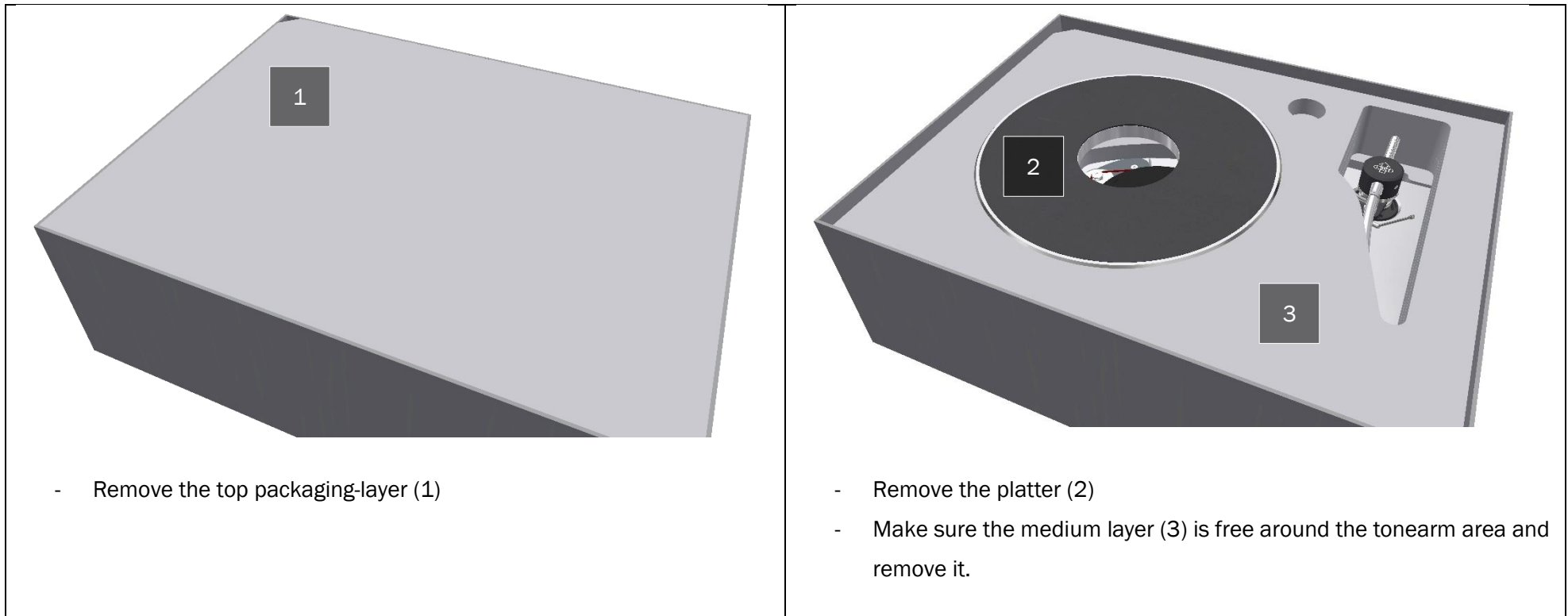


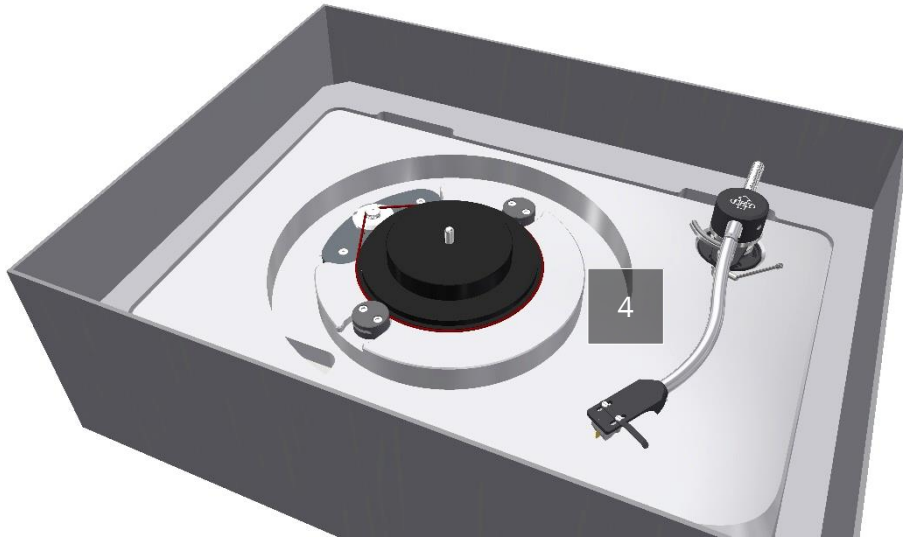


## Unpacking EMT 928

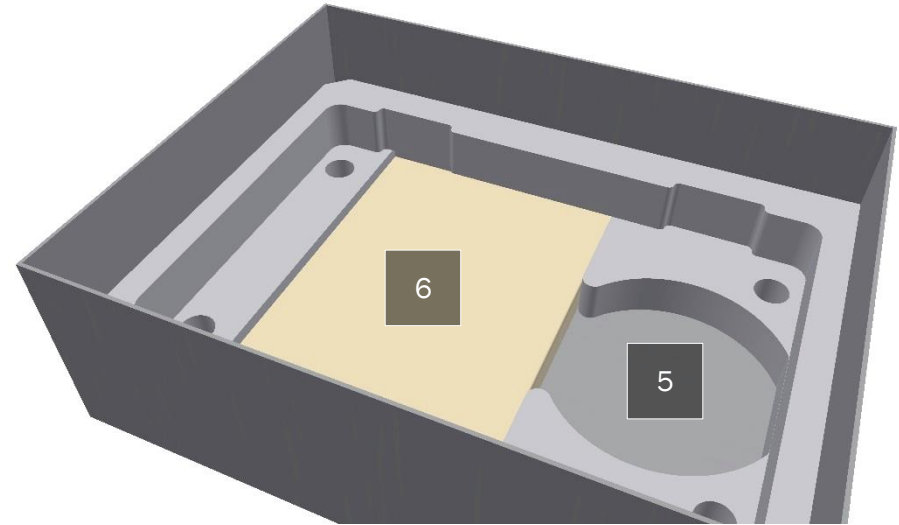
The EMT 928 turntable is packed in a three-layer packaging device. Please open the packaging and remove the content and layers step by step. By packing the device, follow the steps in reversed order.

Place the product parts on an even base, keeping them ready for assembling.





- Remove the turntable chassis (4)



- Remove the power cable (5)
- Remove the accessories box (6). Inside it, you will find:
  - Screwdriver for adjusting the speed
  - Hexagon key to release the transport-lock
  - Spare belt
  - GND-cable



## Installing tonearm

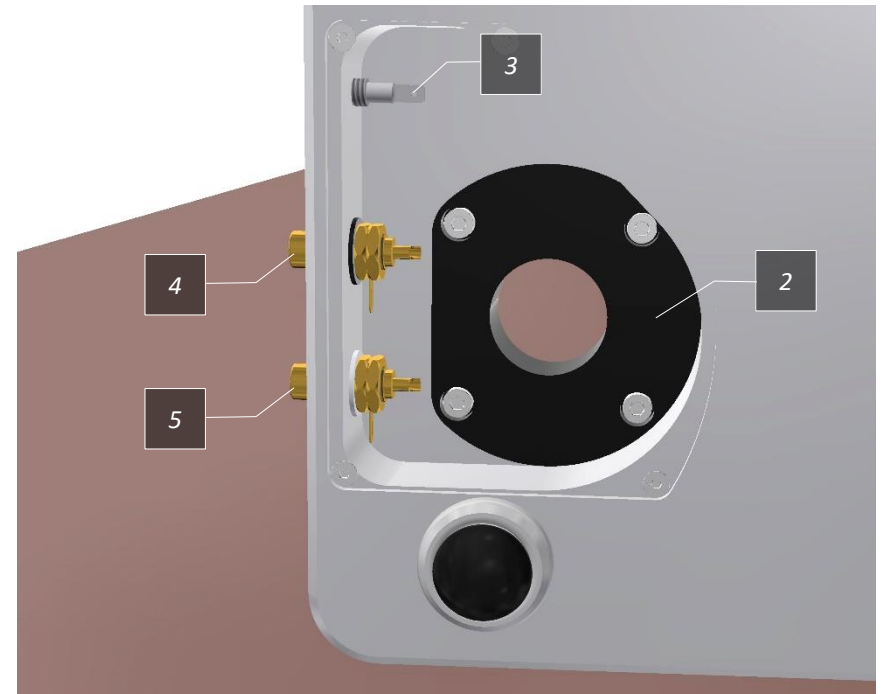
The EMT 928 features a tonearm-adapter and output terminal, both accessible from underneath the chassis. To complete the installation of the tonearm, place the turntable as shown in the picture. The installation of the tonearm must be done by a qualified professional.

### Warning:

To prevent damage to the main bearing, always remove the platter from turntable before moving it from the horizontal position.

### Installation Process

- Remove the tonearm-cover (1) from the chassis
- Make sure the tonearm-adapter (2) suits the specification of your tonearm. Please ask your dealer for support.
- Install your tonearm. Follow the manual provided by the tonearm manufacturer.
- Solder the GND-wire of the tonearm to the GND-terminal (3)
- Solder the right channel output wire to the related RCA-terminal (4). Red = hot, Green = Cold
- Solder the left channel output wire to the related RCA-terminal (5). White = hot, Blue = Cold
- Close the tonearm-cover (1) and tighten the four fastening screws.

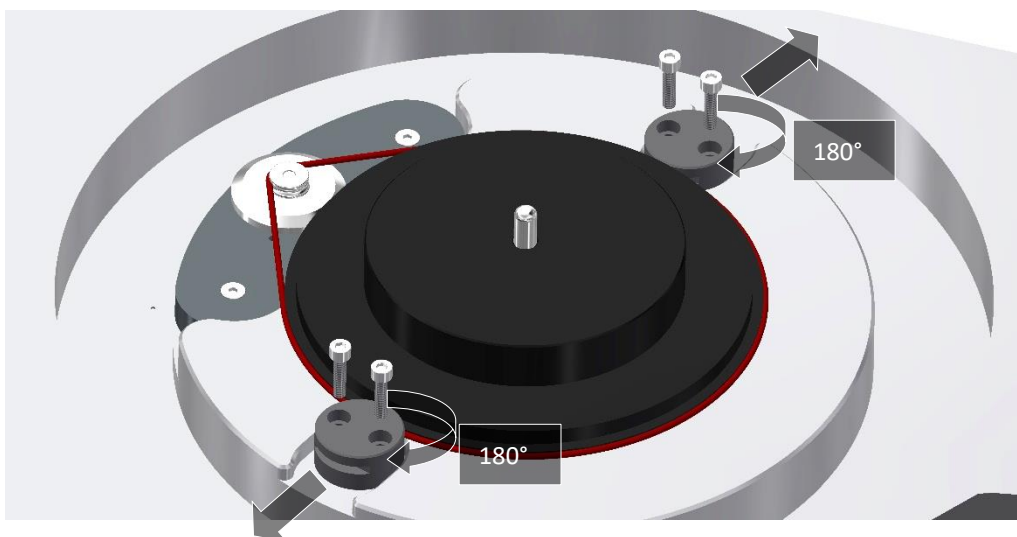
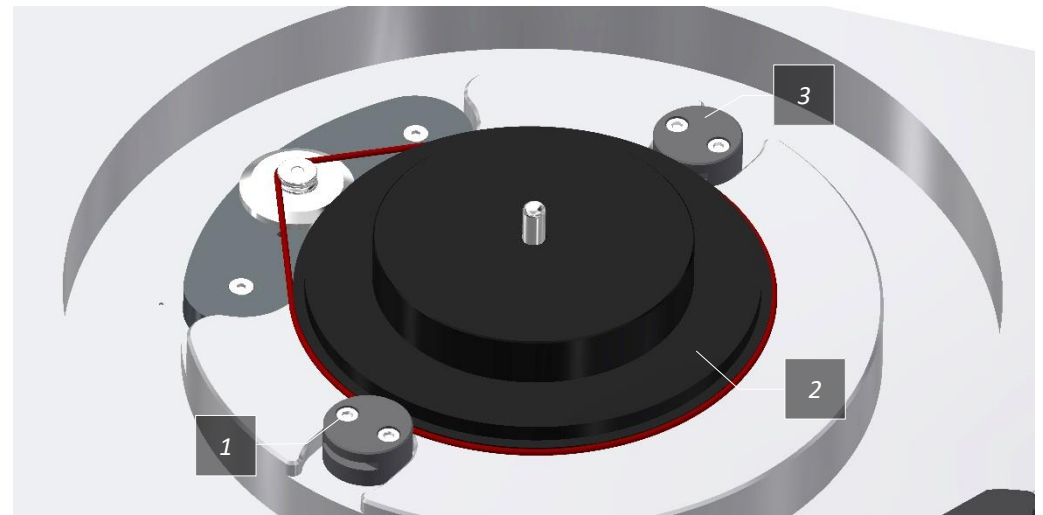




## Transport-lock

The main bearing of the EMT 928 is locked during transport to prevent damages to the bearing caused by vibration. This locking mechanism lifts the sub-platter slightly and keeps it in position. To release the transport lock, please follow the following steps:

1. Release 4x hexagon-screws (1)
2. Remove 4x hexagon-screws (1) completely
3. Move both locking-cylinders (3) out of the sub-platter (2)
4. Turn both locking cylinders 180° around their axis
5. Reinsert 4x hexagon-screw and tighten them
6. Sub-platter incl. belt and flywheel shall be free turning now





## Installing the platter

The turntable's platter is laying freely on the sub-platter. During assembling, please make sure to guide the main-platter **exactly vertically** on the sub-platter. The main-platter has an inlay of a specified high density mat. Please take care of this mat to avoid damage during installation.

1. Guide the main platter (1) carefully and absolutely vertically from above on the sub-platter.
2. Make sure the main platter is bearing completely on the sub-platter.
3. If needed, dress the inlay-mat (2) in the marked area (3), so the record will lay on an absolutely even surface.



## Removing the platter

Carefully lift the main platter up to remove it from the sub-platter. Make sure to guide it avsolutely vertically.





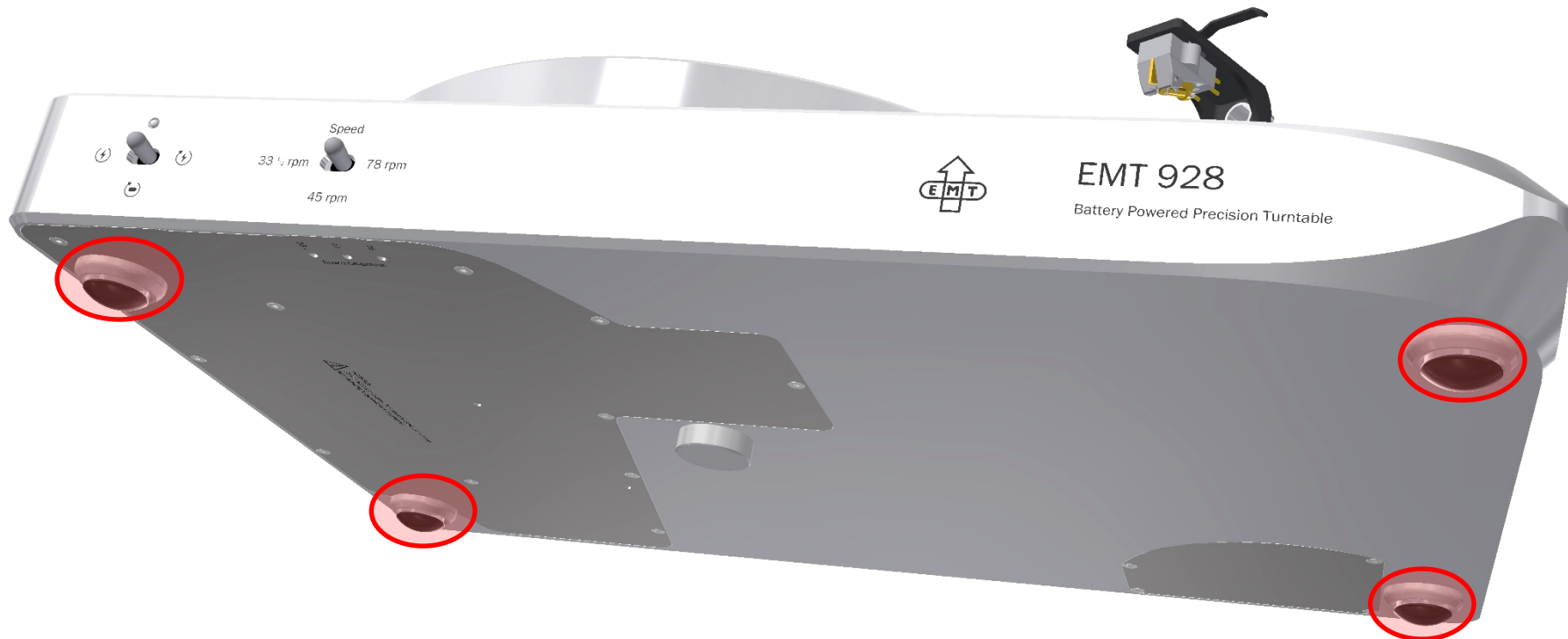
## Levelling the turntable

---

Place the EMT 928 on an even and horizontal base. The level of the turntable can be set by turning the decoupling feet (red marked) in and out of the main chassis. Please use a level gauge to level the unit exactly horizontal. Make sure at least one of the spikes is fully tightened.

The feet are guided not only by a fine pitch thread but by a cylindrical fitting as well. Therefore, no locking of the spike is needed.

The maximum range of adjustment is 4mm.





## Connection

1. Connect the RCA output connectors with the phono input terminal your amplifier.
2. Connect the GND-socket with the GND-terminal of the same amplifier. Use the GND cable delivered in the accessories box.
3. Connect the IEC C14 socket to the mains. Use the power cable provided by your distributor.
4. Switch on the internal charger.

The EMT 928 features a unique battery power system, which allows listening music while the turntable is fully disconnected from the mains. Charging of the battery is controlled by an integrated micro-processor.

- To prevent self-discharge of the battery, always keep the charger on while the turntable is not in use.
- For best performance, switch the charger off while listening to the music.





## Operation

The EMT 928 features the following elements for operation:

1. Switch for setting the function
2. Switch for setting the speed
3. Bicolour LED, showing function and battery level



### Speed

Set the switch (2) to the desired speed position. For further information about speed adjustment, please refer to the next page.

## Operation

Switch (1)	Function	Battery
	Platter Stop	Charging (if charger is ON)
	Platter Run <i>Pure listening mode</i>	Connected to drive only
	Platter Run (if charger is ON)	Charging (if charger is ON)

LED	Info	Battery level
Green, steady glowing	Pure listening mode	OK
Green, blinking slowly	Maintenance charging	Fully charged
Green, blinking fast	Charger switched off	OK
Red, glowing steady	Pure listening mode	RESERVE
Red, blinking slowly	Charging	Charging
Red, blinking fast	Charger switched off	RESERVE



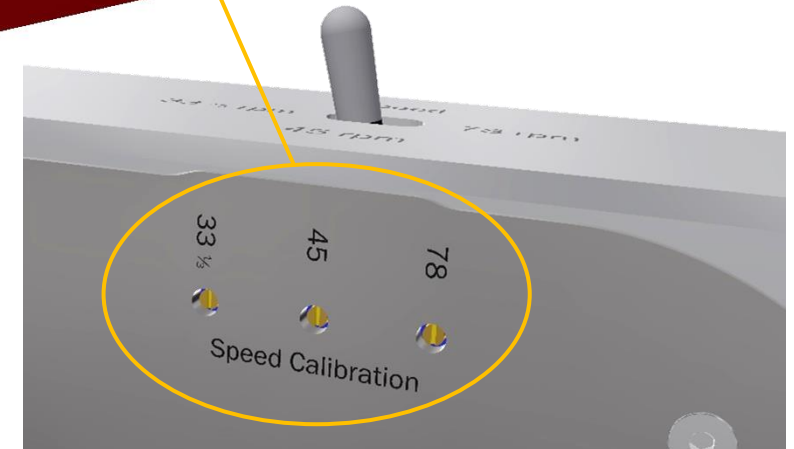
## Adjusting Speed

---

The speed of the turntable was set in our factory by using most precise equipment. This setting is stable for a long time period. If readjusting is needed, use the screwdriver delivered with the EMT 928.

Carfeully move the device to the edge of a table, so you get acces to the potentiometers from undeneath. Set the screwdriver thru the holes at the bottom of the device and connect it to the internal potentiometers.

Turning the key clockwise will increase the speed; turning it counter-clockwise will decrease it.



## Cleaning

---

For cleaning the EMT 928, please use a soft and clean towel. The high density inlay of the platter shall be cleaned with a wet microfiber towel. For this process, please use water only, neither cleaning nor dissolver-liquids.

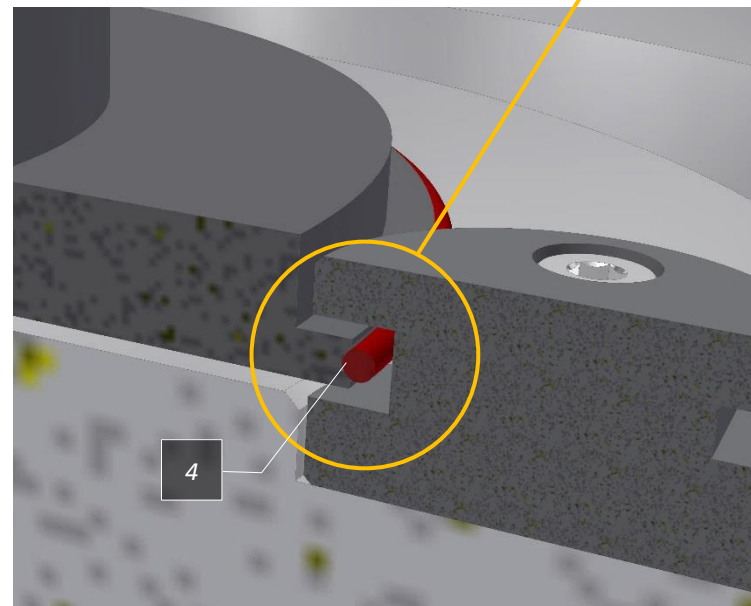
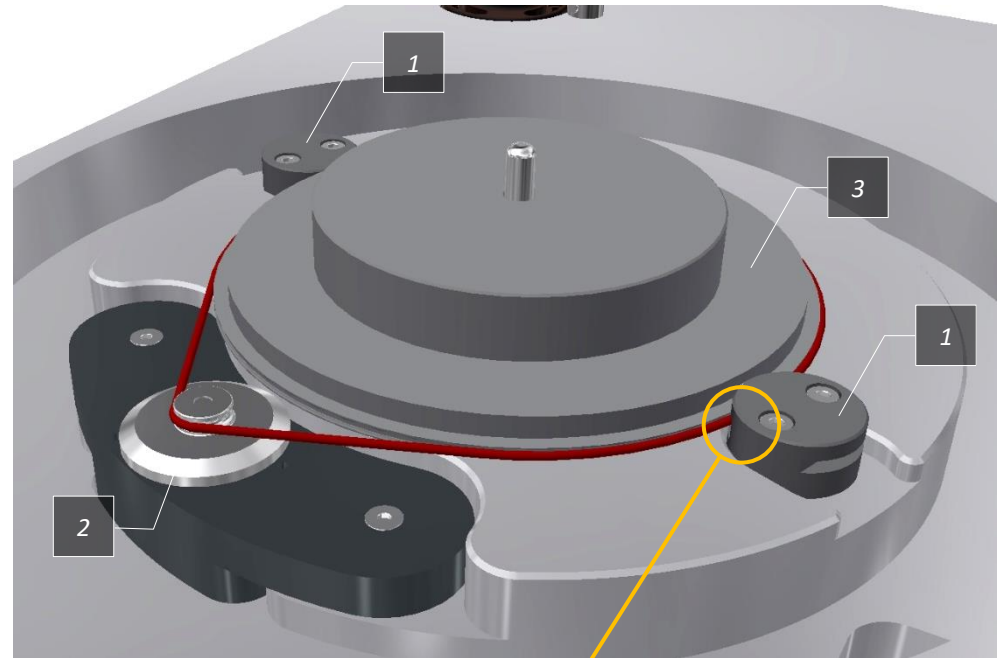


## Changing Belt

The EMT 928 features a most modern 20 Watts motor, combined with a high-precision control loop circuit. To ensure proper transmission from the motor to the sub-platter, we recommend to change the belt once a year.

One spare belt is delivered together with the turntable. Please contact your dealer for further information.

1. Remove the main platter, refer to page 7.
2. Fully remove the locking-cylinder (1), refer to page 6.
3. Remove the old belt.
4. Clean the tread of both, the pulley (2) and the sub-platter (3) with a soft and clean towel.
5. Change the belt for a new one. Make sure the positioning of the belt is correct in the tread (4).
6. Install the locking-cylinder (1) again, refer to page 6.
7. Install the main platter again, refer to page 7.





## Specification

---

Platter Speed:	33 $\frac{1}{3}$ rpm	45rpm	78rpm
Wow and flutter: <i>IEC 386 weighted</i>	$\pm 0,07\%$	$\pm 0,07\%$	$\pm 0,10\%$
Rumble: <i>IEC 98 weighted</i>	-85dB	-80dB	-75dB
Speed-up time:	10s	12s	20s
Battery service life: <i>Standard (LED = Green)</i>	40h	38h	30h
Battery service life: <i>Reserve (LED = Red)</i>	+10h	+9h	+7h
Dimension:	480x340x100mm		
Weight:	23kg		
Input voltage:	100-240VAC, 50-60Hz		
Output terminal:	RCA, with separated tonearm ground		
Mounting distance tonearm:	215-245mm, prepared for EMT 9-inch tonearm		

## Warranty

---

EMT Tontechnik certifies that this device has been inspected and tested before leaving the factory. This product is covered by EMT's two-year warranty, valid from the day of purchase (dealer's invoice). It covers all factory materials and processing errors.

However, this warranty does not cover any failure caused by putting the device to improper use or malfunction caused by neglecting the instructions elsewhere in the user manual.

Unauthorized disassembly or modifications whatsoever of the product will also void the warranty. In any case of warranty claims please contact your dealer.

*Version: V1.5*  
*Date: 11.09.2023*